



 **Pekabex**

Environmental Product Declaration  
Type III ITB No. 775/2025

# Stairs, balconies and docks manufactured on CEM II

**Owner of the EPD**

Pekabex BET S.A.  
Address: Budowlanych 54A  
80-298 Gdańsk, Poland  
Website: [www.pekabex.pl](http://www.pekabex.pl)  
tel.: +48 61 821 04 00  
e-mail: [info@pekabex.pl](mailto:info@pekabex.pl)

**EPD Program Operator**

Instytut Techniki Budowlanej (ITB)  
Address: Filtrowa 1,  
00-611 Warsaw, Poland  
Website: [www.itb.pl](http://www.itb.pl)  
Contact: Michał Piasecki  
[m.piasecki@itb.pl](mailto:m.piasecki@itb.pl), [energia@itb.pl](mailto:energia@itb.pl)



ITB is the verified member of The European Platform for EPD program operators and LCA practitioner  
[www.eco-platform.org](http://www.eco-platform.org)



[www.pekabex.pl](http://www.pekabex.pl)

Issuance date: 28.02.2025; Validity date: 28.02.2030

# Basic Information

This declaration is the type III Environmental Product Declaration (EPD) based on EN 15804 and verified according to ISO 14025 by an external auditor.



It contains the information on the impacts of the declared construction materials on the environment. Their aspects were verified by the independent body according to ISO 14025. Basically, a comparison or evaluation of EPD data is possible only if all the compared data were created according to EN 15804 (see point 5.3 of the standard).

**Life cycle analysis (LCA):** A1-A3, C3, C4 and D modules in accordance with EN 15804 (Cradle-to-Gate with options)

**The year of preparing the EPD:** 2021

**Product standard:** PN-EN 13369, PN-EN 14843:2009, PN-EN 13225:2013

**Service Life:** 50 years for standard products

**PCR:** ITB-PCR A (PCR based on EN 15804)

**Declared unit:** 1 ton

**Reasons for performing LCA:** B2B

**Representativeness:** Polish product

# Manufacturer



Pekabex S.A. is a manufacturer of prefabricated structures in Poland.

The company produces traditional reinforced elements, as well as modern prestressed elements used in enclosed structures (e.g. production and storage halls, offices, trade objects, railway stations, parking places), engineering objects (e.g. bridges, tunnels), and atypical designs. We offer wide range of standard products and realize special orders for individual designs. Pekabex S.A. possesses six production plants located in Poznań, Gdańsk, Bielsko-Biała, Mszczonów and Marktzeuln.



Fig 1. A view of Pekabex S.A. (Poland).

# Product description and application

# 3

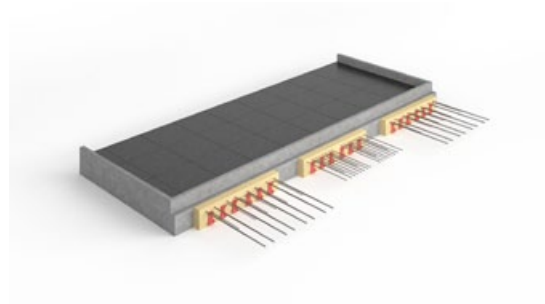
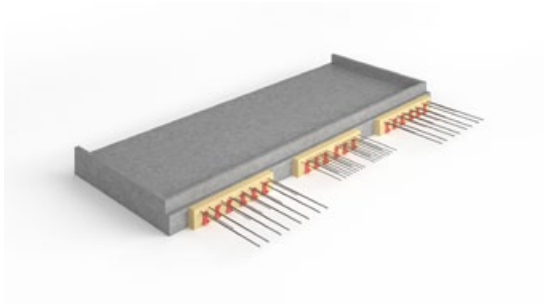
Prefabricated reinforced elements are used for building construction. Products, such as stairs, balconies and docks are available in various sizes, finishing options and shapes.

**Prefabricated reinforced elements are offered in the form of:**

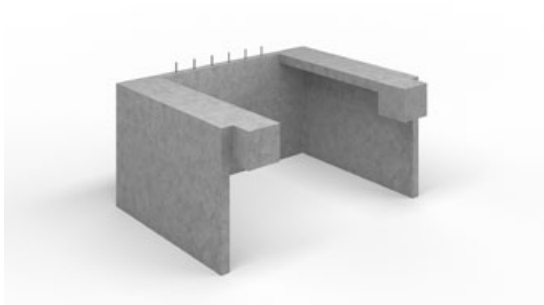
stairs



balconies



docks



Prefabricated reinforced elements possess certificates of Zakładowa Kontrola Produkcji No. 1487-CPR-107/ZKP/15, 1487-CPR-108/ZKP/15, 1487-CPR-109/ZKP/15, 1487-CPR110/ZKP/15, 1487-CPR-111/ZKP/15 and Nordcert certificate No. 2215.

# Life Cycle Assessment (LCA) – general rules applied



## **Allocation**

The allocation rules used for this EPD are based on general ITB PCR A. Production of the stairs, balconies and docks is a line process conducted in the manufacturing plan of Pekabex S.A. in Gdańsk (Poland). All impacts from raw materials extraction and processing are allocated in module A1 of the LCA. Impacts from the global line production of PEKABEX S.A. were inventoried and were allocated to the production of the declared products based on the products mass basis. Water and energy consumption, associated emissions and generated wastes are allocated to module A3.

## **System limits**

The life cycle analysis (LCA) of the declared products covers: product stage – modules A1-A3, end of life – modules C2-C4 and benefits and loads beyond the system boundary – module D (cradle-to-gate with options) in accordance with EN 15804+A2 and ITB PCR A v.1.5. The details of systems limits are provided in product technical report. Energy and water consumption, emissions as well as information on generated wastes were inventoried and were included in the calculations. It can be assumed that the total sum of omitted processes does not exceed 5% of all impact categories. In accordance with EN 15804+A2, machines and facilities (capital goods) required for the production as well as transportation of employees were not included in LCA.

## **A1 and A2 Modules: Raw materials supply and transport**

Raw materials such as sand, gravel, cement (CEM II), limestone, steel reinforcing components, additives and packaging materials come from both local and foreign suppliers. Means of transport include trains and lorries with loading capacity <10t and >16t. For calculation purposes Polish and European fuel averages were applied.

## **A3: Production**

All of the components for precast production are coming to Pekabex by wheels deliveries or by train. Material for production is stored in designated for it places. Each of them is described in detail, exactly what material is to be there (e.g. aggregate entanglements, cement silos or designated zones for steel types, grades or diameters). Reinforcement elements are made partially automatically and manually. Ready reinforcement is placed in previously individually prepared forms. Concrete is poured into the prepared forms. . Ready elements are kept in the formwork until the minimum design parameters are achieved. After evacuation, each element is checked by the quality control department, and then taken to an external warehouse, and then directly to the customer for the construction site.



A scheme of manufacturing of the stairs, balconies and docks by Pekabex BET S.A.

### Modules C3, C4 and D: End of life

Stairs, balconies and docks constitutes intermediate products. Versatile application of stairs, balconies and docks excludes the possibility of precise modeling of the impacts occurring at the de-construction stage thus the module C1 is not declared within this EPD. In the adapted end-of-life scenario, the de-constructed products are transported to a waste processing plant distant by 90 km on > 16t lorry EURO 5, where undergo shredding with the use of crawler gear crusher equipped with magnetic separator (115 kW, electric drive) – module 3. Recovered materials undergo re-use, recycling and landfilling according to the Polish treatment practice of industrial wastes - Table 1. The remaining materi-

als are classified as inert wastes in the European list of waste products and are forwarded to a landfill in the form of mixed construction and demolition wastes. Environmental impacts declared in module C4 are associated with exchanges to process-specific burdens. Module D presents potential credits resulting from the use of crushed concrete wastes as aggregates for road foundation or ballast and the recycling of the steel reinforcement. Module D presents credits resulting from the recycling of the primary steel scrap, calculated in accordance with the net scrap approach developed by World Steel Associated. Impacts of materials that constitute less than 1.0% of the total system flows were not taken into consideration.

**Table 1. End-of-life scenario of stairs, balconies and docks**

Product	Material recover	Re-use	Recycling	Incineration	Landfilling
Concrete waste	100%	95%	0%	0%	5%
Steel	100%	0%	95%	0%	5%
Mineral wool	100%	0%	0%	0%	100%
Insulation foam	100%	0%	0%	100%	0%

**Data collection period**

Primary data provided by Pekabex S.A. covers a period from 01.01.2023 to 31.12.2023(1 year). The life cycle assessments were prepared for Poland and Europe as reference area.

**Data quality**

The data used for LCA originate from ITB-LCI questionnaires completed by Pekabex S.A. using the data inventoried at manufacturing plant in Gdańsk, specific EPDs, ITB database and Ecoinvent v.3.10. No specific data collected is older than five years and no generic datasets used are older than ten years. The representativeness, completeness, reliability, and consistency are judged as good.

**Assumptions and estimates**

The impacts of the representative the stairs, balconies and docks were aggregated using weighted average. Impacts were inventoried and calculated for all products manufactured by Pekabex S.A..

**Calculation rules**

LCA was performed using ITB-LCA tool developed in accordance with EN15804+A2.

**Databases**

The data for the LCA calculation comes from specific EPDs, Ecoinvent v.3.10 and ITB Database. Specific data quality analysis was a part of an external audit.



# LIFE CYCLE ASSESSMENT (LCA) – Results



Declared unit

The declaration refers to declared unit (DU) – 1 tonne of the stairs, balconies and docks manufactured on CEM II by Pekabex S.A.

**Table 2. System boundaries for the environmental characteristic the stairs, balconies and docks.**

Environmental assessment information (MNA – Module not assessed, MD – Module Declared, INA – Indicator Not Assessed)

Product stage			Construction process		Use stage							End of life				Benefits and loads beyond the system boundary
Raw material supply	Transport	Manufacturing	Transport to construction site	Construction-installation process	Use	Maintenance	Repair	Replacement	Refurbishment	Operational energy use	Operational water use	Deconstruction demolition	Transport	Waste processing	Disposal	Reuse-recovery-recycling potential
A1	A2	A3	A4	A5	B1	B2	B3	B4	B5	B6	B7	C1	C2	C3	C4	D
MD	MD	MD	MNA	MNA	MNA	MNA	MNA	MNA	MNA	MNA	MNA	MNA	MD	MD	MD	MD

## Stairs, balconies and docks manufactured on CEM II

### Environmental impacts: (DU) 1 tonne

Indicator	Unit	A1	A2	A3	A1-A3	C2	C3	C4	D
Global warming potential	eq. kg CO2	7,58E+01	9,12E+00	1,09E+01	9,57E+01	6,26E-01	7,14E-01	2,01E-01	-1,18E+01
Greenhouse gas potential - fossil	eq. kg CO2	9,27E+01	9,10E+00	1,09E+01	1,13E+02	6,23E-01	7,01E-01	2,01E-01	-1,13E+01
Greenhouse gas potential - biogenic	eq. kg CO2	3,27E-01	1,45E-02	2,45E-02	3,66E-01	2,13E-03	1,26E-02	1,85E-04	-5,02E-01
Global warming potential - land use and land use change	eq. kg CO2	2,23E-02	3,18E-03	1,27E-03	2,68E-02	2,45E-04	1,65E-04	2,14E-05	-1,55E-02
Stratospheric ozone depletion potential	eq. kg CFC 11	1,86E-06	1,79E-07	1,94E-07	2,23E-06	1,44E-07	1,34E-08	4,33E-08	-8,33E-07
Soil and water acidification potential	eq. mol H+	8,37E+00	2,87E-02	7,82E-02	8,47E+00	2,53E-03	7,42E-03	2,09E-03	-6,61E-02
Eutrophication potential - freshwater	eq. kg P	1,18E-02	7,22E-04	1,22E-02	2,47E-02	4,19E-05	1,27E-03	6,44E-06	-6,74E-03
Eutrophication potential - seawater	eq. kg N	5,68E-02	9,69E-03	1,16E-02	7,81E-02	7,64E-04	1,06E-03	9,25E-04	-1,50E-02
Eutrophication potential - terrestrial	eq. mol N	1,08E+00	1,05E-01	1,03E-01	1,29E+00	8,33E-03	9,05E-03	1,01E-02	-1,73E-01
Potential for photochemical ozone synthesis	eq. kg NMVOC	2,74E-01	4,46E-02	3,29E-02	3,51E-01	2,55E-03	2,54E-03	2,79E-03	-4,59E-02
Potential for depletion of abiotic resources - non-fossil resources	eq. kg Sb	9,18E-05	2,97E-05	3,98E-06	1,25E-04	2,21E-06	1,01E-06	1,05E-07	-8,78E-05
Abiotic depletion potential - fossil fuels	MJ	4,54E+02	1,28E+02	1,65E+02	7,47E+02	9,25E+00	1,14E+01	2,73E+00	-1,64E+02
Water deprivation potential	eq. m3	1,33E+01	6,38E-01	2,22E+00	1,61E+01	4,28E-02	2,32E-01	7,36E-03	-1,66E+01

### Additional impacts indicators: (DU) 1 tonne

Indicator	Unit	A1-A3	C1 - C4	D
Particulate matter	disease incidence	INA	INA	INA
Potential human exposure efficiency relative to U235	eg. kBq U235	INA	INA	INA
Potential comparative toxic unit for ecosystems	CTUe	INA	INA	INA
Potential comparative toxic unit for humans (cancer effects)	CTUh	INA	INA	INA
Potential comparative toxic unit for humans (non-cancer effects)	CTUh	INA	INA	INA
Potential soil quality index	dimensionless	INA	INA	INA

### Environmental aspects on resource use: (DU) 1 tonne

Indicator	Unit	A1	A2	A3	A1-A3	C2	C3	C4	D
Consumption of renewable primary energy - excluding renewable primary energy sources used as raw materials	MJ	1,89E+01	2,49E+00		3,23E+01	1,33E-01	8,29E-01	1,57E-02	-1,73E+01
Consumption of renewable primary energy resources used as raw materials	MJ	5,26E+01	0,00E+00	0,00E+00	5,26E+01	0,00E+00	0,00E+00	0,00E+00	0,00E+00
"Total consumption of renewable primary energy resources (primary energy AND primary energy resources used as raw materials)"	MJ	7,15E+01	2,49E+00	1,09E+01	8,48E+01	1,33E-01	8,29E-01	1,57E-02	-1,73E+01
"Consumption of non-renewable primary energy, excluding non-renewable primary energy resources used as raw materials"	MJ	3,04E+02	1,28E+02	1,65E+02	5,97E+02	9,25E+00	1,21E+01	2,73E+00	-1,64E+02
Consumption of non-renewable primary energy resources used as raw materials	MJ	1,59E+02	0,00E+00	0,00E+00	1,59E+02	0,00E+00	0,00E+00	0,00E+00	0,00E+00
"Total consumption of non-renewable primary energy resources (primary energy and primary energy resources used as raw materials)"	MJ	4,64E+02	1,28E+02	1,65E+02	7,57E+02	9,25E+00	1,21E+01	2,73E+00	-1,64E+02
Consumption of secondary materials	kg	3,02E+01	6,03E-02	1,71E-02	3,02E+01	3,10E-03	9,23E-04	1,06E-03	-7,11E+00
Consumption of renewable secondary fuels	MJ	1,08E-01	7,34E-04	5,90E-05	1,08E-01	3,42E-05	5,05E-06	3,68E-06	-1,51E-03
Consumption of non-renewable secondary fuels	MJ	1,11E-01	0,00E+00	0,00E+00	1,11E-01	0,00E+00	0,00E+00	0,00E+00	0,00E+00

**Other environmental information describing waste categories: (DU) 1 tonne**

Indicator	Unit	A1	A2	A3	A1-A3	C2	C3	C4	D
Hazardous waste, neutralized	kg	6,77E-01	1,92E-01	1,29E+00	2,16E+00	1,04E-02	2,37E-06	3,64E-03	-6,22E-01
Non-hazardous waste, neutralised	kg	4,11E+01	4,46E+00	5,93E+01	1,05E+02	1,84E-01	6,75E-02	2,59E-02	-1,78E+01
Radioactive waste	kg	1,24E-03	4,65E-05	2,21E-05	1,30E-03	6,37E-05	9,82E-06	1,95E-05	-8,69E-04
Components for re-use	kg	0,00E+00	0,00E+00	0,00E+00	0,00E+00	0,00E+00	0,00E+00	0,00E+00	0,00E+00
Materials for recycling	kg	3,71E+00	1,01E-03	9,82E-04	3,71E+00	2,86E-05	6,94E-05	3,67E-06	-1,15E-03
Materials for energy recovery	kg	1,42E-05	8,12E-06	1,95E-06	2,42E-05	2,32E-07	9,71E-08	5,83E-08	-1,00E-05
Energy exported	MJ	7,99E-01	5,97E-02	9,03E-02	9,49E-01	1,03E-02	3,32E-02	1,18E-02	-1,24E+00

## Verification

The process of verification of this EPD is in accordance with ISO 14025 and ISO 21930. After verification, this EPD is valid for a 5-year-period. EPD does not have to be recalculated after 5 years, if the underlying data have not changed significantly.

The basis for LCA analysis was PN-EN 15804 and ITB PCR A

Independent verification corresponding to ISO 14025 (subclause 8.1.3.)



external



internal

External verification of EPD: PhD. Eng. Halina Prejzner

LCI audit and input data verification: M.Sc. Eng. Michał Chwedaczuk. m.chwedaczuk@itb.pl

LCA, LCI audit and input data verification: Ph.D., D.Sc., Eng. Michał Piasecki, m.piasecki@itb.pl

Note 1: The declaration owner has the sole ownership, liability, and responsibility for the information provided and contained in EPD. Declarations of construction products may not be comparable if they do not comply with EN 15804+A2. For further information about comparability, see EN 15804+A2 and ISO 14025.

Note 2: ITB is a public Research Organization and Notified Body (EC Reg. no 1488) to the European Commission and to other Member States of the European Union designated for the tasks concerning the assessment of building products' performance. ITB acts as the independent, third-party verification organization (ISO 17025/17065/17029). ITB-EPD program is recognized and registered member of The European Platform - Association of EPD program operators and ITB-EPD declarations are registered and stored in the international ECO-PORTAL

## Normative references

- ITB PCR A General Product Category Rules for Construction Products
- ISO 14025:2006. Environmental labels and declarations – Type III environmental declarations – Principles and procedures
- ISO 21930:2017 Sustainability in buildings and civil engineering works – Core rules for environmental product declarations of construction products and services
- ISO 14044:2006 Environmental management – Life cycle assessment – Requirements and guidelines
- ISO 15686-1:2011. Buildings and constructed assets – Service life planning – Part 1: General principles and framework
- ISO 15686-8:2008 Buildings and constructed assets – Service life planning – Part 8: Reference service life and service-life estimation
- EN 15804:2012+A1:2013 Sustainability of construction works – Environmental product declarations – Core rules for the product category of construction products
- PN-EN 15942:2012 Sustainability of construction works – Environmental product declarations – Communication format business-to-business
- KOBiZE Wskaźniki emisyjności CO<sub>2</sub>, SO<sub>2</sub>, NO<sub>x</sub>, CO i pyłu całkowitego dla energii elektrycznej. December 2023

LCA, LCI, input data verification  
Michał Piasecki, PhD. D.Sc.  
Qualified electronic signature

Head of Thermal Physic, Acoustic and Environment Department  
Agnieszka Winkler-Skalna, PhD.  
Qualified electronic signature