



# ART OF PREFABRICATION

WE DESIGN, MANUFACTURE, BUILD

WE DESIGN,  
MANUFACTURE,  
BUILD

WITH  
PEOPLE  
IN MIND



## TOMASZ SEREMET

---

President of the Board of Pekabex S.A.

“We offer the Design & Build services to the private sector customers. We attach high importance to supporting our business partners on each stage of an investment, both in formal and legal matters, as well as in indicating economic technical solutions. We treat each project individually, as if we were building for ourselves.”



# EXPERIENCE, KNOWLEDGE, AND RELIABILITY

Since 1972, we have been the largest and one of most experienced manufacturers of prestressed and reinforced concrete precast products in Poland.

Our aim is to meet the needs of the investors. We find implementing more and more daring construction challenges – which often comprise innovative design projects that impact the architectural environment – to be an adventure in engineering.

Our projects include structures: hall buildings: production and warehouse halls, shopping malls, office buildings and car parks, infrastructural, housing, as well as energy facilities, stadiums and other structures both in Poland and abroad.

Since July 2015, our shares are traded on the Warsaw Stock Exchange.





# UNPARALLELED WHEN IT COMES TO PRECAST PRODUCTS

Precast items revolutionised  
the construction industry.



## FAST CONSTRUCTION

They save time, and at the same time  
provide durability and resistance  
to harsh weather and the impact of  
soil combined with flame retardant  
properties that guarantee high quality  
of the structure.

There are no downtimes  
during the assembly  
of structures made of  
precast items, which  
lowers the costs of labour.

## LONG SPAN

Long-span items can  
be used in construction  
without the use of  
supporting structures.

## ALL YEAR ROUND

Projects can be  
implemented by  
specialised assembly  
teams even at ambient  
temperatures below zero.

## ASSEMBLY STRAIGHT FROM THE TRUCK

i.e. directly from  
the vehicle  
is a huge advantage  
if there is limited space  
at the site, e.g. in dense  
urban areas.

## LOWER COSTS

The use of standardised  
structural element  
reduces investment costs  
by lowering the outlays  
on manufactured items.

## HIGH QUALITY

Unlike a “traditional”  
construction site, at  
the manufacturing  
plant the quality of  
the elements is inspected  
at every production stage.





# FAST CONSTRUCTION

---



**ADAM  
KONIECZNY**  
Sales Director  
General Contracting Department

“We dedicate a lot of time to discussing things with investors so as gain better insight into their needs. The most frequent priorities are faster construction, durability, and fire resistance of the structure. With precast concrete we can guarantee that all these will be as expected.”

## JULY

The erection of a logistics facility with an area of approx. 30,000 sqm is started by the installation of columns on the prepared foundation.

---



## AUGUST

A standard 12x25 m arrangement of columns is already in place. Works on the housing and roof can begin as early as 4 weeks after the assembly of precast elements at the construction site.

---



## SEPTEMBER

The structure is erected within 10–12 weeks regardless of the time of year.

---







ROBERT  
JĘDRZEJOWSKI

President of the Board of Pekabex S.A.

“Many years of experience with precast items, state-of-the-art manufacturing technologies, and, above all, the people, who are our greatest asset, guarantee that every construction project will be implemented at a top level.”

COMPREHENSIVE  
SUPPORT  
THROUGHOUT  
THE ENTIRE  
INVESTMENT PROCESS

With our excellent engineering and production capabilities we are able to offer comprehensive range of services relating to the design, manufacture, transport, and assembly of precast elements,  
**INCLUDING TURNKEY PROJECTS.**







## DESIGN

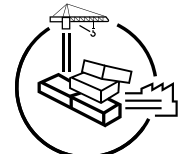
We take pride in having an in-house design unit that specialises in designing buildings and structures made of precast elements and employs 140 elite engineers with international experience, who cooperate

with external design offices on a regular basis. Our specialists provide the customers with proposals for innovative solutions compliant with Polish and European standards.



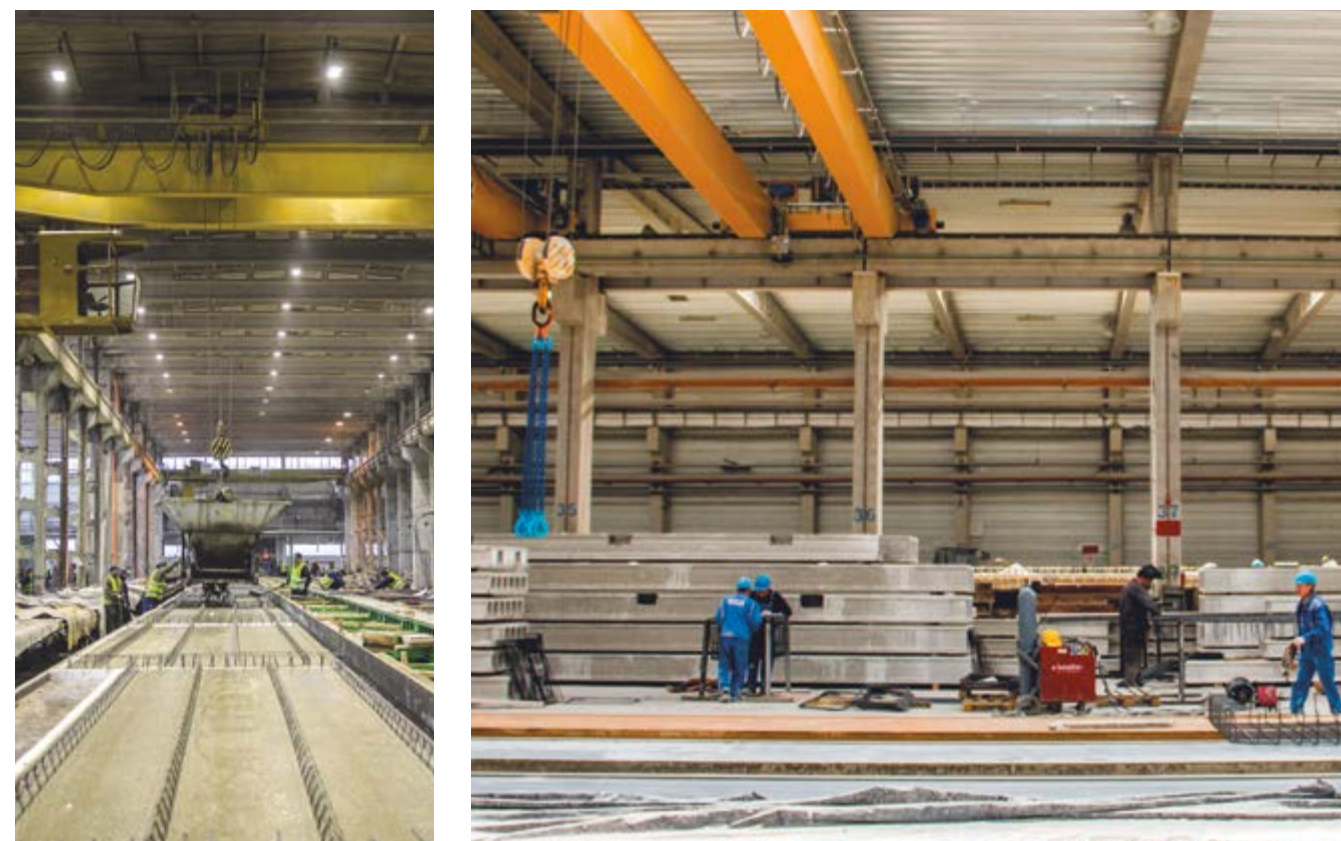
Projects developed following the **Pekabex system** are modern, safe and cost-effective, and the erected

structures stand out in the architectural environment.



## MANUFACTURE

Four plants strategically located throughout Poland ensure our Clients get economic transport, high availability and best deadlines.



The Pekabex Group consistently increases its production capacity.

We are planning further investments e.g. in the expansion and modernization of the existing plants and in market consolidation.



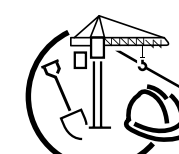
## TRANSPORT

We offer secure shipping of the manufactured precast items to construction sites throughout Poland, by road, or by road and rail. We also arrange sea transport of our products to destinations

outside Poland. Our low-floor trucks can transport items with a length of more than 40 m and a weight of more than 80 t, and can transport standing elements with a height up to 4.3 m.



Our Logistics Department oversees on an ongoing basis the continuity of delivery and safety of transport.



## ASSEMBLY

We offer the assembly of precast structures at the construction site regardless of the time of year and weather. With 23 in-house and contracted construction crews we guarantee that the project will be completed on time and as agreed in its terms.



We assemble precast items directly out of the vehicles, without the need for storage at the construction site.





ŁUKASZ  
STODOLNY

“How to meet even most surprising design requirements? Regardless of the size and purpose of the building, we believe that each project has a great impact on the environment. For that reason, we seek new and unconventional ideas that will make full use of the space and available assets, **and Customers save time and money.**”







## CHRISTOPHE CARION

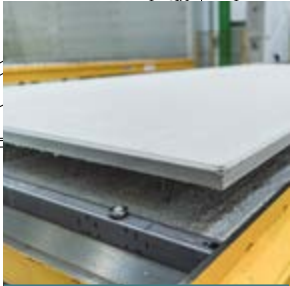
---

President of the Board of  
Centrum Nowoczesnej Prefabrykacji Sp. z o.o.  
(Pekabex Group)

“With our comprehensive production schedules, and a large warehouse for finished products at the plant we are able to guarantee continuity of production and delivery, as well as efficient and quick assembly at the site.”



OUR  
PRODUCTS



FILIGREE



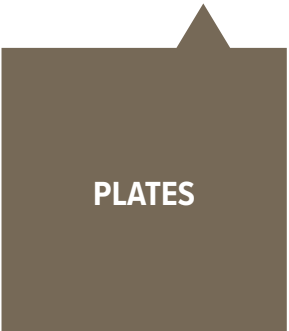
ROOF  
BEAMS



FLOOR  
BEAMS

ASK US ABOUT OUR PRODUCTS  
AND SERVICES TODAY

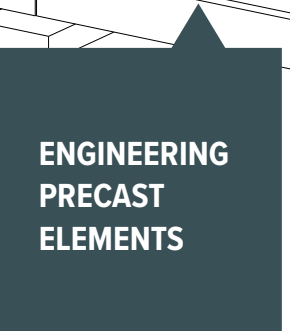
The production facilities at each plant enable us to manufacture various elements, both prestressed and reinforced, in the amount of more than 140.000 m3 of precast items per year. With the technical facilities at our disposal we are able to manufacture items with a weight up to 120 tons. The plant in Poznan is equipped with automated (computer-controlled) lines with a length of 120 m each for the manufacture of prestressed structural elements.



PLATES



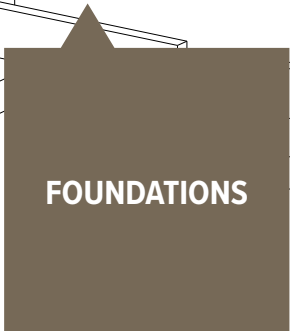
PRECAST  
ELEMENTS FOR  
STADIUMS



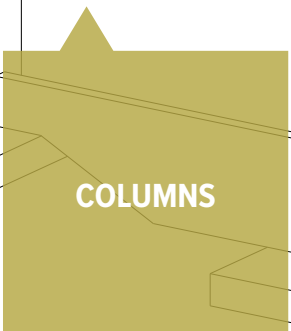
ENGINEERING  
PRECAST  
ELEMENTS



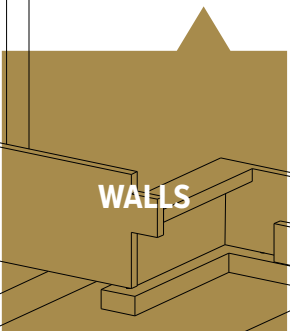
OTHER  
ITEMS



FOUNDATIONS



COLUMNS



WALLS





# WE PAY UTMOST ATTENTION TO THE QUALITY OF OUR PRODUCTS

We continuously improve our Quality Management System so as to best meet the requirements of our customers. We strive to provide top quality products and services in all our business activities.

In addition to the experience and qualifications of our personnel, and numerous awards, our certificates in particular attest to the quality of our precast products. Our products are inspected on a continuous basis, both at the plant and by third parties. By continuously expanding the potential of our services and the range of precast items, we steadily improve and implement new technologies along with the state-of-the-art instruments.





# THE EUROPE’S MOST ADVANCED FACTORY OF PREFABRICATED UNITS

Kokoszki II plant in Gdańsk was launched at the beginning of 2020 and is equipped with an innovative, automated production line.

Diversity is behind the concept of the plant. Filigree, double filigree slabs and insulated wall components are manufactured here. The plant is expected to achieve the capacity of 500,000 m2 of prefabricated elements, enough to build up to 2,000 apartments annually. #Industry 4.0

## THE FIFTH PEKABEX PLANT - A MINE OF MODERNITY

Housing construction and automation are among the strategic areas of Pekabex business.





# WE SPECIALISE IN VARIOUS TYPES OF PROJECTS.

With the broad range of our products **we are able to tailor the solution to perfectly match any kind of building.**



## WIDE-SPAN BUILDINGS

- single-span
- multiple-span
- high bay warehouses



## CIVIL ENGINEERING STRUCTURES

- tunnels
- stations
- flyovers and bridges
- elevated roads
- retaining walls



## POWER FACILITIES

- power plants
- wind farms



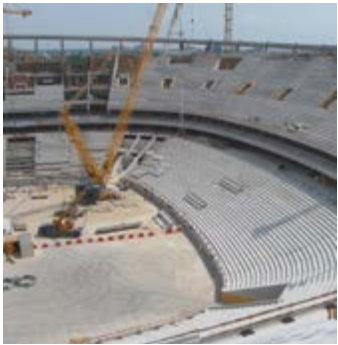
## OFFICE BUILDINGS AND FRAMED STRUCTURES

- shopping centres
- multiplex theatres
- hotels
- car parks
- multi-storey garages
- office buildings



## RESIDENTIAL BUILDINGS

- multi-dwelling units



## STADIUMS





## WIDE-SPAN BUILDINGS

Logistics facilities, warehouses, high bay storage facilities erected from assembled precast elements are stable and functional.

- large spans of elements mean less columns and better arrangement of the space, that Customers need so much,
- significant resistance of precast concrete elements means lower operating costs - snow is no longer a problem,
- the lower cross-section of the roof allows increasing the height of racks and reducing heating costs
- fire resistance in the price!

LET'S TALK ABOUT THE  
ADVANTAGES OF  
PREFABRICATED CONSTRUCTIONS





# WE WANTED VERY MUCH FOR OUR HALL TO LOOK AESTHETICALLY

Interview with Mr. Lech Świątek, the CEO of Lech Modern Fabrics

### KEY PROJECT DETAILS

LOCATION: **GLINKA DUCHOWNA K. KOSTRZYNA**

INVESTOR: **PPUH “LECH” LECH ŚWIĄTEK**

WAREHOUSE AREA: **10,200 M²**

OFFICE AREA: **600 M²**

TOTAL FOOTPRINT: **10,800 M²**

CONSTRUCTION START DATE: **15-09-2015**

CONSTRUCTION END DATE: **10-08-2016**

“Swarzędz used to be a leading European manufacturer, but almost all its products were exported outside Poland. We had no means whatsoever of getting any upholstery fabrics for the products to be sold in Poland” recalls Mr. Lech Świątek, the CEO of Lech Modern Fabrics in Kostrzyn k/Poznania. Our little shop with 3 employees has grown since 1979 into one of the three largest furniture fabrics trading companies in Poland. To meet the company’s storage needs, the owner decided to build a warehouse with an area of 10,800 sqm complete with high-standard offices. In the interview he tells us about the development of a hall constructed in the Pekabex precast system.

**THE NEW COMPANY HEADQUARTERS IS LOCATED AT A STRATEGIC JUNCTION OF A2 MOTORWAY AND S5 EXPRESSWAY, BUT YOU ARE NOT FROM THE NEARBY KOSTRZYN?**

We come from Swarzędz. It is the city where we established our first shop and where we used to manufacture furniture. In 1994, I abandoned the manufacturing business. I was overwhelmed as the person in charge of it, and my son was a little boy. Sometimes I wish I had decided otherwise. For many years, Poland has been a leader on the European market in terms of production output, even though Italy is ahead of us in turnover. On the other hand, the trade business continued to grow steadily, and now we employ 50 people, export our

products all over Europe. It is still a family business, however: more than a dozen employees are our close family members. From the very beginning, I have prioritised good relations with the personnel. Some of our employees are with us for as many as 26 or 25 years, and our head accountant for 24 years, but everyone is treated as equal and a friend.

**WHEN DID YOU DECIDE TO START INVESTING IN THE CONSTRUCTION OF YOUR OWN HALL BUILDING?**

Even though our turnover had grown rapidly, we lacked genuine headquarters, so in the eyes of the visiting sales representatives we were still a small company. We have grown to become a major player – we sell our fabrics to almost all European countries and we are now able to source them from any part of the world. As we had not used to participate in tenders for such large projects, we did not have any related experience. We sent 27 request for quotation and started meeting the contractors. At first glance, I found all the offers and presentations to be similar,

each representative claimed to be the best, but all the steel structures looked the same. When I visited such a structure, I instantly knew that it was not something I would like to build: for wide span of columns the floor truss had to be as high as around 3 meters, which just looked ugly in a low hall. This was when I heard of concrete structures for the first time.

**WHAT WERE THE FACTORS IN CHOOSING A REINFORCED CONCRETE STRUCTURE?**

We really wanted the hall to have an appealing look and, above all, to provide nice and comfortable working environment to the team. When we wanted to lease part of the area, one of the prospective tenants said, upon seeing the premises:

“It's clear that you have made this for yourselves and not just for lease.”  
It was a great compliment for us.



And that’s most often the case – those who come to visit us enjoy the view of the building at the first glance at its roof structure. We also wanted the construction to be fast, as the quotation process had already been drawn out. Initially I did not ask for the price, I had heard that it might be higher than that of a steel structure. However, after several meetings, and some analysis of the projects and quotations, we managed to negotiate good terms, and decided to sign a contract with Pekabex for an implementation of a turnkey project.

**DO YOU HAVE ANY WISHES LEFT TO BE MET?**

Now we are at a phase of stabilisation following the construction. The official opening was attended by almost all the invited guests, including many of our foreign partners. We were proud seeing how their view of us have changed. I have two children, and the company is, in a way, a third one. With my son we have managed to create a successful duo, and I begin to consider handing the company over to him. I want it to thrive even without me.





# OFFICE BUILDINGS AND FRAMED STRUCTURES

Framed structures made of Pekabex precast elements are erected at a very fast pace.  
The storey construction is realized in a week.  
Prestressed elements allow for a better arrangement of space

ASSEMBLY OF PREFABRICATED  
ELEMENTS IS OFTEN THE ONLY  
TECHNOLOGICAL OPTION IN  
ATYPICAL PLACES,

where everyday work and construction alternate, and it is not possible to store materials at the construction site.





# SEAMLESS AND FAST CONSTRUCTION OF A MODERN OFFICE COMPLEX: BUSINESS GARDEN IN WROCŁAW

Interview with Mr. Grzegorz Tymich, Contract Director at Budimex S.A.

## WHAT IS THE BUSINESS GARDEN WROCŁAW?

Business Garden Wrocław is a complex of office buildings that is unlike any typical office complex. There are vast distances between the buildings, and the remaining area is filled with plants, as well as “lazy” and active recreation areas. At the tenants’ disposal there are boules yards, volleyball, basketball courts, etc. They can also dine at the restaurant. The area is open to everyone. Underneath the complex there is an underground garage with 690 parking spaces. The facility was designed and built in compliance with the LEED Platinum certification requirements – the most stringent level of LEED requirements. And we managed to get the certificate! Personally, I enjoy this project a lot.

KEY PROJECT  
DETAILS

ADDRESS: **UL. LEGNICKA, WROCŁAW**  
INVESTOR: **VASTINT POLAND**  
GENERAL CONTRACTOR: **BUDIMEX SA**  
USABLE FLOOR AREA: **63,985 M<sup>2</sup>**, INCLUDING:  
UNDERGROUND GARAGE: **21,930 M<sup>2</sup>**  
OFFICE AREA: **34,900 M<sup>2</sup>**  
REMAINING AREA: **7,155 M<sup>2</sup>**

## HOW DID YOU VISUALISE THE SITE BEFORE ITS CONSTRUCTION?

For me, it was another challenge. New customer, new co-workers and contractors, LEED certification, and an international team. This is what I love about this job. It starts with a field of thickets, and ends up as a nice facility thanks to the contributions of all the parties.

## WHY DID YOU CHOOSE PEKABEX FOR A CONTRACTOR?

Upon making the decision, I prioritised my needs, first of all the expectation of top quality of workmanship. The choice always depends on several factors: what there is to do and within what deadline. In this case there was a very wide range of the precast structures – ground floors of 3 buildings. As for the deadline, I would call it challenging; capacity of the contractor. Both in terms of technology and design; experience: of the personnel, designers, assembly workers, and production managers; flexibility, and the ability to make trade-offs and communicate; and, of course, the price: i.e. will I be able to afford the product. PEKABEX turned out to be the precast structure contractor who met these requirements. Not all went smoothly from the get-go. But the professional attitude and determination of the people of both parties working together made it possible to carry out all the work at the expected quality level.



## WHAT WAS YOUR FIRST PRIORITY IN THE CONSTRUCTION PROCESS?

We agreed with the customer that there would be a specific outcome: the facility is to be of top quality and has to be constructed and commissioned within the deadline. At the same time we needed to follow the rules: the ethics of cooperation with the contractors, and the safety of the employees at the site are top priority. We also make effort to minimise the inconvenience of our operations to the local community. If all these conditions are met, it is a success.

## WHAT ADVICE WOULD YOU GIVE TO GENERAL CONTRACTORS THAT ARE ABOUT TO CHOOSE A CONSTRUCTION TECHNOLOGY?

It is hard to give advice to my general contractor fellows with as much experience. We keep learning and taking on new challenges in small and large scale. But as they say, a structural engineer is the most creative job in the world... The technology is often selected at the phase of establishing customer’s prerequisites. It depends on the available time, budget, and the concept of construction. I believe that the precast

technology, the modern one, despite its higher initial price has major advantages, and represents a higher level of technological evolution of the construction industry. It results in faster and less burdensome construction at the site.





## ARE TWO MONTHS OF CONSTRUCTION SHORTER - A LOT?

Thanks to designing the structure in the Pekabex prefabrication system, we gain time and savings. Structures put up in this way let you forget about delays and contractual penalties associated with them.



## CIVIL ENGINEERING STRUCTURES

Construction is not a very visible, but a very important element of the building. Modern civil engineering structures, roads and bridges in particular, are highly advanced in terms of technology and design.

This often necessitates individual approach and tailored solutions for challenging lie of the land. For years, we have been designing and building civil engineering structures made of precast items, in compliance with the guidelines of the investor, and taking into account the needs of the users of the facility and the environmental protection requirements.



## ENGINEERING STRUCTURES FOR STREAMLINED COMMUNICATION

Tubings are prefabricated reinforced concrete tunnel casing elements, with sealing and contact parts. A single tunnel ring consists of several tubing elements and the so-called key. Great accuracy in the production and during assembly is required to build the tunnels.



## TUBING

The construction of tunnels, particularly in adverse ambient conditions and dense urban development, requires not only advanced engineering knowledge, but also the tubing manufacturer's ability to ensure significant production capacity and excellent quality of components.

The best proof of how the customers can benefit from years of experience are large tunnels completed in Poland with Pekabex participation, the one under Martwa Wisła in Gdańsk, the tunnel of CZAJKA sewage treatment plant in Warsaw, the "Tunnel that connects Poland" in Łódź to name a few.

### **CZAJKA treatment plant tunnel in Warsaw:**

1,081 rings  
6,486 tubings  
Ring OD: 5.35 m  
Total volume: 5,687.5 m<sup>3</sup>  
Tunnel length: 1,300 m  
Field production  
Formwork supplier: Herrenknecht  
Production period: January 2011 - July 2011

### **Tunnel under Martwa Wisła in Gdańsk:**

1,090 rings  
7,630 tubings  
Ring OD: 12.2 m  
Total volume: 47,360.5 m<sup>3</sup>  
Tunnel length: 2 x 1,072.5 m  
Field production  
Formwork supplier: Herrenknecht  
Production period: May 2013 - February 2014

### **"The tunnel that connects Poland" in Łódź:**

4,031 rings  
29,900 tubings  
Ring OD: 8.5 m and 12.7 m  
Total volume: 87,615.4 m<sup>3</sup>  
Reinforcement mass: 6,571,155 kg  
Tunnel Length: 3,514 m + 2,700 m  
Carousel production  
Formwork supplier: Herrenknecht  
Planned production period: August 2020 - August 2021



# RESIDENTIAL BUILDINGS

With one of the longest track records in designing and constructing precast elements for residential buildings in Poland we are able to take on any challenge in this type of projects.

We work for the best: we gained experience in the construction of various residential buildings with modern architecture on, among others, **the demanding Scandinavian market**. We offer a comprehensive range of products, including: walls with built-in joinery and electric installations, floors, staircase sections, balcony sections. With these we are able to make buildings that look great and at the same make full use of the advantages of the precast technology.

## A STOREY ASSEMBLED IN 4-5 DAYS?

The great advantage resulting from the application of the Pekabex prefabrication system in residential constructions is the speed and security of assembly, precision of workmanship and durability of the structure.





FOR THE CONSTRUCTION OF THE LNG TERMINAL IN SWINOUJSCIE, OUR ELEMENTS MET THE STRICTER REQUIREMENTS REGARDING MANUFACTURING AND ASSEMBLY TOLERANCES,

were made taking into account seismic loads, and the assembly took place directly at the sea in high corrosivity conditions.



## WE HAVE BUILT THE LARGEST GAS TERMINAL IN THIS PART OF EUROPE

The strategic importance of this kind of **power facilities** for the security of the country, makes its construction a challenge for all the participants. Their thorough design, as well as the following guarantee of continuity of production and timely delivery are of particular importance.

### Specialized projects

We are also the first company in Poland to construct a wind farm with turbine tower structures made entirely of reinforced concrete precast products. We manufactured as many as 220 items comprising a total of 10 wind turbines.

### Advantage

At our disposal we have all the assets required to shorten the lead time and optimise investment outlays, as we can take advantage of precast elements that we fully adapt to the requirements of a specific facility.



# WE HAVE COMPLETED STADIUMS FOR EURO 2012 AND MORE

Stadiums that are designed and made of reinforced concrete precast elements are the only solution that meets the needs of large-scale and short-duration construction projects.

We have acquired extensive experience in the construction of sports facilities mainly during the implementation of arenas for EURO 2012, including the National Stadium in Warsaw. We also delivered elements for the construction of the following: Municipal Stadiums in Poznań, Wrocław, Łódź, Tychy, Gliwice, Bielsko-Biała and Lubin.

## How does the assembly of 120 elements per day look like?

Providing thousands of stands to the stadium is a huge logistical effort in the field of production, transport and assembly, which can only be guaranteed by the largest manufacturers.



TENS OF THOUSANDS OF FANS  
JUMPING IN ONE RHYTHM?  
OUR CONSTRUCTORS HAVE  
FORESEEN THIS!

Designing solutions for the CC3 consequence class requires a lot of experience, professionalism and responsibility.



# OUR PROJECTS - FULFILLED PROMISES



Olivia Business  
Center  
Gdańsk  
2010-present  
PLN 144 million



Tunnel under the Martwa  
Wisła river  
Gdańsk  
2013-2014  
PLN 44.9 million



Łódź Fabryczna  
railway station  
2014-2016  
PLN 43.7 million



Filborna Power Plant  
Sweden  
2011-2012  
PLN 26.2 million



Świnoujście  
LNG Terminal  
2012-2014  
PLN 41.5 million



Inter Europol Piekarnia  
Szwajcarska  
Marki  
2012-2014  
PLN 55.5 million



National Stadium in  
Warsaw  
2010-2011  
PLN 47.5 million



Municipal Stadium  
Poznań  
2010  
PLN 20.3 million



Volkswagen  
paint hall, Spine  
Września  
2014-2015  
PLN 51.2 million



PKP railway station  
and car park  
Poznań  
2011-2013  
PLN 28 million



Business Garden  
Wrocław  
2015  
PLN 11 million



Clip Halls  
Swarzędz  
2013-2015  
PLN 40.8 million





## BEATA ŻACZEK

---

Vice President/CFO of Pekabex S.A.

“Pekabex is a trustworthy business partner that guarantees fair cooperation based on the company's sound balance sheet financing investments along with the company's own funds. We care for financial liquidity, because it is the foundation that allows engineers to smoothly implement building projects. This solid foundation consists of the daily work of specialists in many fields.”



# PEKABEX IS PEOPLE

Careers at Pekabex



## WOJCIECH, DESIGN DEPARTMENT

Poznań

“Even though production of precast items is repeatable by definition, working for a major company in a sizable project team allows us to jointly seek new, non-schematic solutions. Those who are working at Pekabex for many years are glad to share their experience with the colleagues.”

## ANDRZEJ, MANAGER OF THE GDAŃSK PLANT

Gdańsk

“We acknowledge that Pekabex consists of people, who make great things, so it is worth investing in their development. The company's training programme enables the workers to complete a range of courses that improve their qualifications.”

## BARTOSZ, ASSEMBLY WORKER AT PEKABEX

Szwecja

“What is here? At Pekabex there's all of it – good salary, professional equipment, people who get along well, understand each other without words and take care of each other's safety. You just have to like it! You have to like the lack of boredom and the dust, as this is what you get on a construction site.”

## MARCIN, SALES DEPARTMENT

Bielsko-Biała

“Clients evaluate us after fulfilled promises. The company's and employees' potential allows us to implement the most demanding projects and gives us satisfaction of the goals we have achieved together.”

## MILENA, STUDENT, ASSEMBLY DEPARTMENT

Mszczonów

“As a young engineer I want to get to know what it is like to work at a construction site.” I appreciate even just being here, new challenges just keep coming, and I need to be able to cope with them. I also appreciate the flexible approach of my superiors, which

enables me to arrange my work and study schedules so that they do not interfere with each other. The teachers value my efforts, and the work boosts my self-confidence.”





# CONTACT US

www.pekabex.pl

**Poznań HEADQUARTERS**

ul. Szarych Szeregów 27  
60-462 Poznań  
Phone +48 61,821 04 00  
Fax +48 61 822 11 42  
info@pekabex.pl

**Gdańsk PLANT**

ul. Budowlanych 54A  
80-298 Gdańsk  
Phone +48 58,347 54 30  
Fax +48 58 349 40 60

**Gdańsk II BRANCH**

ul. Geodetów 17  
80-298 Gdańsk



**Bielsko-Biała PLANT**

ul. Ks. Londzina 29  
43-382 Bielsko-Biała  
Phone +48 33 49 95,100  
Phone +48 33 49 95,101

**Mszczonów PLANT**

ul. Grójecka 19, Badowo Mściska  
96-320 Mszczonów  
Phone +48 46,858 18 00  
Phone +48 46,858 18 09

Photography on page 16: Scandinavian  
Edition: August 2020



[www.pekabex.pl](http://www.pekabex.pl)

