

 **Pekabex**



HALL SYSTEM PEKABEX[®]

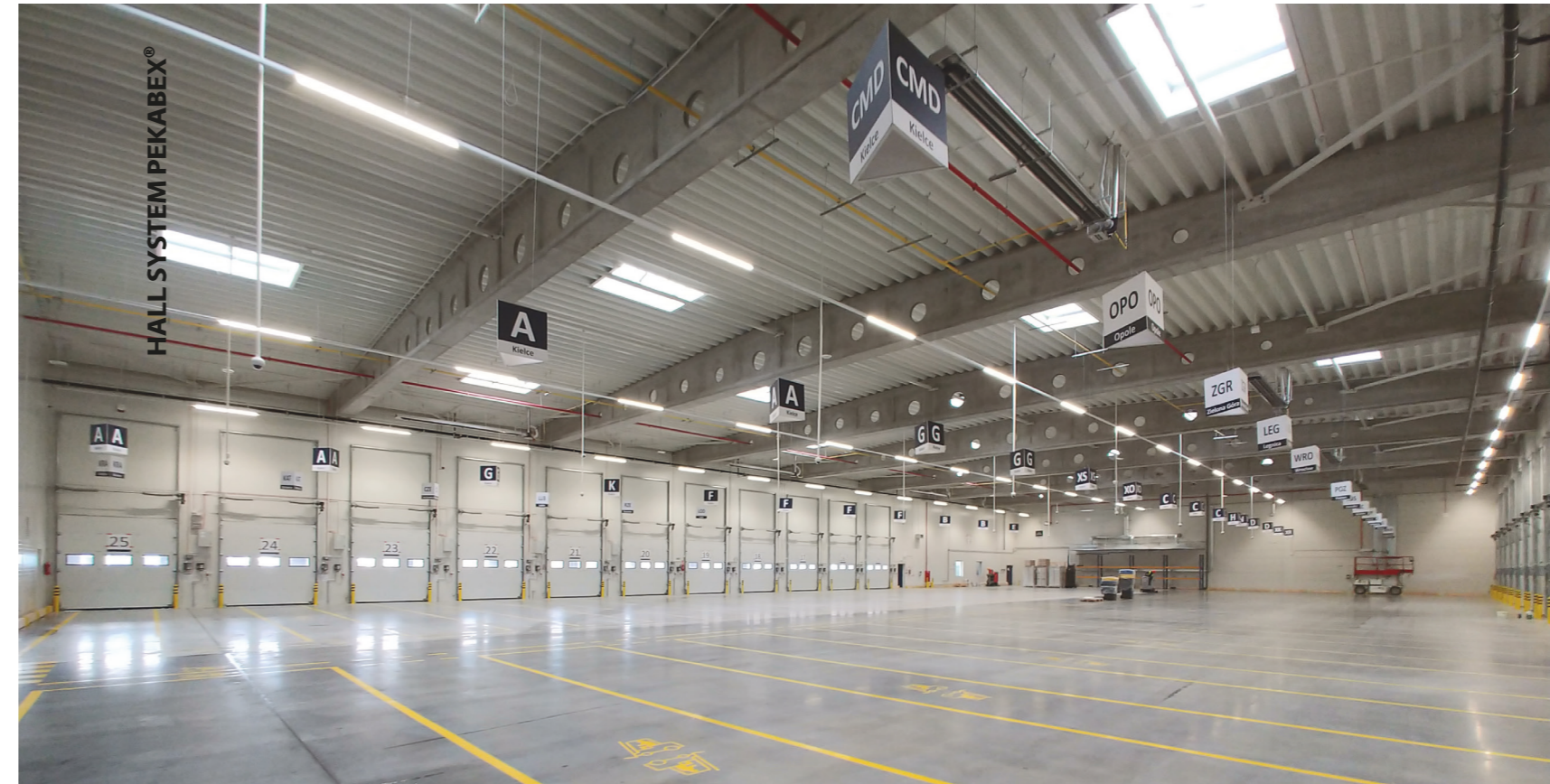
ul. Szarych Szeregów 27
60-462 Poznań, Poland

T: +48 61 821 04 00
M: +48 693 240 014

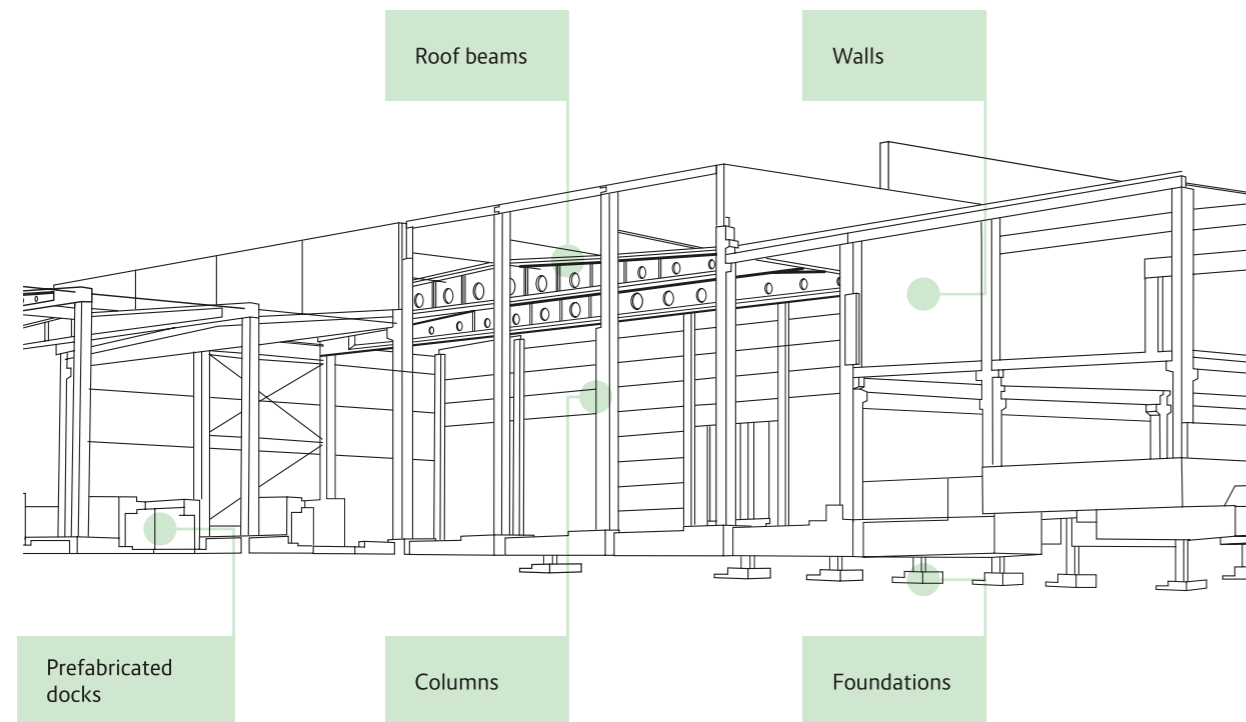
hale@pekabex.pl
www.pekabex.pl

HALL SYSTEM PEKABEX®

The experience in design and production as well as many years of cooperation with construction companies and private investors made it possible for our engineers to create the first hall system in Poland.



Panattoni Kielce



*Patents and utility models - pending and granted: Reinforced concrete trimmer joist (W.123919), Gable reinforced concrete girder (W.123823), Connector for prefabricated columns (W.124179), Connector for prefabricated column reinforcement (W.124233), Connector for reinforcing bar, prefabricated column with pin, lower floor column or foundation (W.126210), Connector for reinforcing bar, prefabricated column with foundation (W.126228), Connector for reinforcing bar, prefabricated column with pin bar, lower floor column or foundation (W.127016), Connector for reinforcing bars, prefabricated column with foundation pin bar foundation (W.127557), Prefabricated ground plate (W.127843 and W.128091)

State-of-the-art

The columns and roof elements of the system are made with the reinforced concrete module technology with passive and prestressed reinforcement. These elements take advantage of the state-of-the-art patent-protected* design solutions to provide customers with the best combination of the most economic price, quality, performance and speed of construction.

Environmentally-friendly

We design our Hall System to be environmentally friendly. By lowering the consumption of cement we reduced the emissions of CO₂. Roof-mounted photovoltaic systems recommended by us power with your business with green energy.

Available

With the production capacity provided by five modern plants strategically located throughout Poland we are able to deliver the components of the system in line with your expectations.

Modular

Standard elements are used to make a structure tailored to the needs of the customer thus creating value for the purchaser.

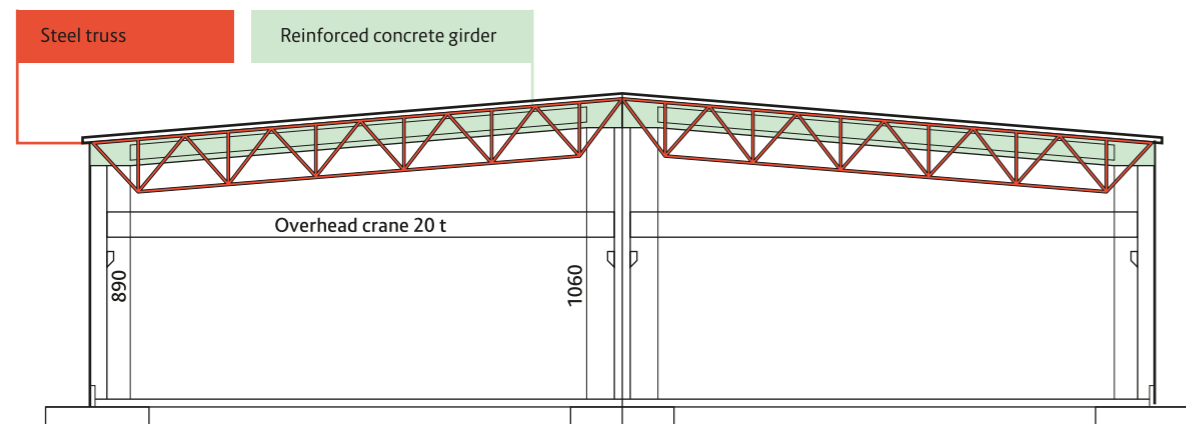
Comprehensive

With comprehensive structural solutions we are able to implement logistics & warehousing facilities as well as complex industrial plants, such as a coffee roasting plant, mint or bakery.

BENEFITS

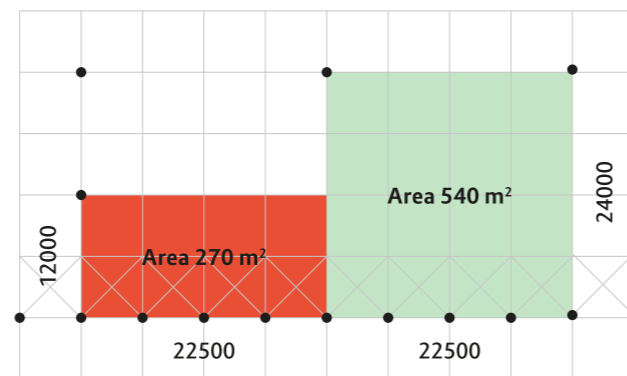
CREATING VALUE FOR INVESTORS

- lower reinforced concrete girder height compared to the one made of steel results in greater surface area, reduced volume of the building or smaller area of the envelope - for cheaper construction and operation,
- if there are any restrictions in the designed height of the building, lower girders increase the clear span inside the building,
- expanding the column grid at a low cost provides the building with large areas without columns and increases the bearing capacity of the roof for future installations



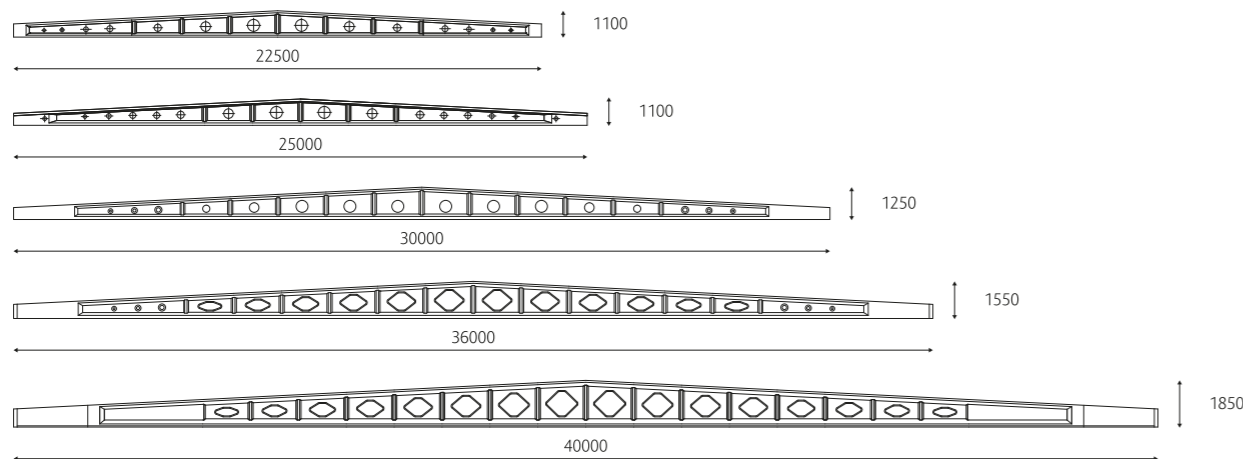
PARAMETERS AND SOLUTIONS

- standard column grid 12/22.5 m and 24/22.5m,
- the grid can be tailored to the customer's expectations,
- maximum expansion of the grid to obtain an area without columns of up to 1600 sqm.



ROOF

- pre-stressed roof girders, no purlins, corrugated metal roofing,
- standard girder length of 24 m (height 1.1 m) max. length up to 46 m (height 2.2 m).



Warehousing and logistics halls



BENEFITS

Safety and lower insurance costs with possible compliance with the most stringent fire resistance standards.

Bearing capacity of the roof, without changing the overall dimensions of the elements - to make snow removal from the roof unnecessary and make provision for future installations, including photovoltaic systems.

Lower costs of maintenance and operation - no need for:
- paint coats,
- protective coats.

Maintenance

	Reinforced concrete	Steel
Life	50 years	2-15 years
Corrosion protection	Cover	Paint coat
Fire resistance	Cover	Spray/paint coat
Fire protection	50 years	2-15 years

CAPABILITIES OF PEKABEX SYSTEM



Ceiling structures implemented inside girder openings without taking up the hall clear span.



Foundations for loading docks - two docks can be placed between a pair of columns.



Expansion of column grid - even to more than 50 metres with large-span girders.

CONSTRUCTION TIME
approximately 2 weeks
for a standard 20,000 sqm hall.



CUSTOMISABLE TYPE OF COOPERATION

Turnkey facilities for most demanding customers complete with office space and welfare facilities.



We are also able to carry out your investment project in a comprehensive manner as a general contractor or prepare and manufacture prefabricated structure of the facility. We will choose a structural solution that suits you best. Enjoy safety with structure made by professionals. Remember that the structure is the heart of a building.

Flexible solutions - choose what you need

PURCHASE AND ASSEMBLY OF THE STRUCTURE:
THE HEART OF A BUILDING

PACKAGE-BASED EXECUTION OF SELECTED CONSTRUCTION WORK SCOPES

EXECUTION OF INVESTMENTS AS A GENERAL CONTRACTOR

FOR DESIGNERS:

For drawings of Pekabex® Hall System standard elements and technical support please contact us by email at doradca.techniczny@pekabex.pl or at the following phone number: +48 695 952 045

FOR INVESTORS:

For more information on the Pekabex® Hall System please contact us by e-mail at hale@pekabex.pl or at the following phone number: +48 693 240 014



Even though we are a construction company, we realise that an industrial hall is not just space that is functional and well-organised, but also requires modern architectural design, elegant interior and a well-thought-out infrastructure.

Robert Jędrzejowski,
CEO of Pekabex S.A.

ZAUFALI NAM



OLIVIA BUSINESS CENTRE



Pekabex Hall System